



The Metropolitan Water District of Southern California

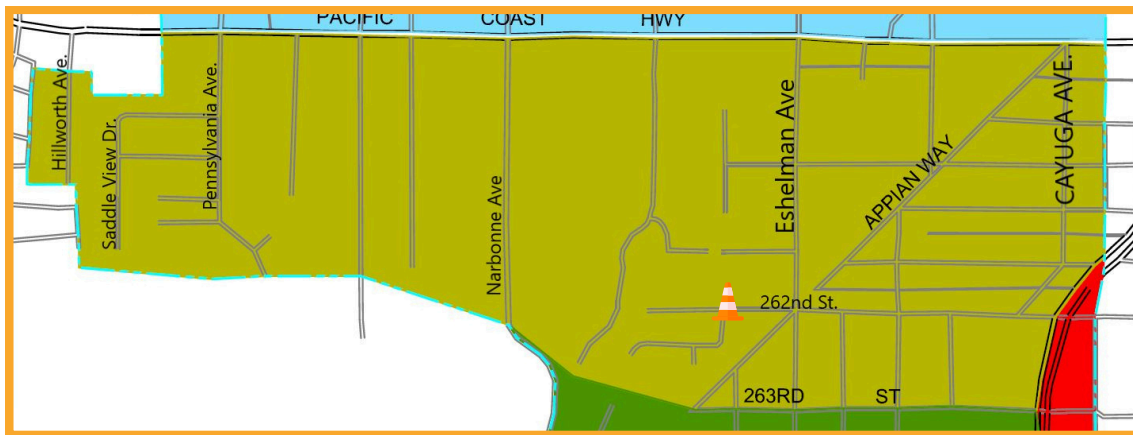
Infrastructure Maintenance Activities in Your Community

ABOUT THE PROJECT

Metropolitan will be performing infrastructure improvements to the Second Lower Feeder in your neighborhood. The work includes a valve replacement that plays a critical role in supplying the City of Lomita with water deliveries. Following this project will be a shutdown, which includes dewatering, inspecting and performing maintenance inside the pipeline.

This work is necessary to ensure our water distribution system continues to provide a reliable water supply for our 26 public member agencies that serve 19 million customers.

We ask for your understanding and patience as we work to complete these activities as quickly as possible.



WHAT TO EXPECT

PLEASE LIMIT YOUR WATER USAGE DURING THE VALVE REPLACEMENT.

- You may experience low water pressure during the valve replacement.
- You may notice water on the street due to dewatering of the pipeline.
- You may hear noise from portable generators and other equipment.
- You may notice trucks, equipment, and our staff at work. The maintenance and inspection requires our crew to work within the pipe.

WHO IS METROPOLITAN

The Metropolitan Water District of Southern California is a state-established cooperative of member agencies, cities and public water agencies that serve about 19 million people across six counties. Metropolitan imports water from the Colorado River and Northern California to supplement local supplies, and helps its members to develop increased water conservation, recycling, storage, and other resource-management programs.

FOR MORE INFORMATION



CommunityRelations@
mwdh2o.com



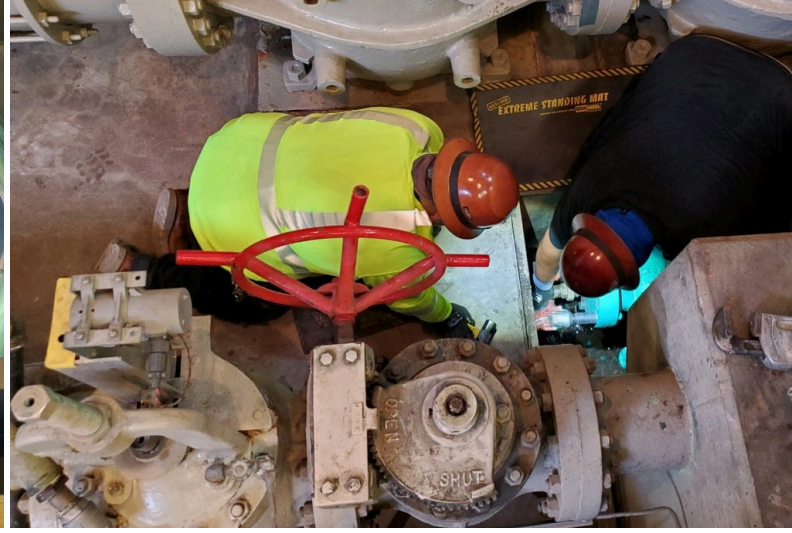
Lizeth Martinez
Community Relations
Interim Team Manager
(626) 827-0614

Ivonne Castillo
Senior Public Affairs Representative
(213) 217-6809



www.mwdh2o.com

Please help conserve water during these maintenance activities by limiting water usage as much as possible. Thank you for your cooperation!



SCHEDULE

The valve replacement is scheduled for

April 10, 2025, 8:00 p.m. - 4:00 a.m.*

April 11, 2025, 8:00 p.m. - 4:00 a.m.*

The shutdown will follow and is anticipated to be completed by April 25, 2025 (around-the-clock work).

*Subject to change

FOR MORE INFORMATION

✉ CommunityRelations@mwdh2o.com

☎ Ivonne Castillo: (213) 217-6809
Senior Public Affairs Representative

☎ Lizeth Martinez: (626) 827-0614
Community Relations Interim Team Manager

🌐 www.mwdh2o.com

WHAT IS A SHUTDOWN?

- One of the biggest challenges to ensuring reliable water deliveries in Southern California is the need to routinely repair and upgrade existing pipelines and associated facilities, some of which are more than 60 years old.
- To meet that responsibility, The Metropolitan Water District of Southern California temporarily takes parts of its delivery system out of service to conduct inspections and perform maintenance and upgrades with the least impact on consumers.
- To safely gain access to many of these facilities, Metropolitan must halt the flow of water temporarily and allow the pipeline to empty. In some areas, particularly low points in the system, this water must be pumped out.
- Metropolitan makes every effort to minimize the amount of water that is discharged. When feasible, the water that is pumped out is discharged into facilities that replenish watersheds and local groundwater supplies. However, in some isolated situations, not all water is able to be captured.

Thank you. We appreciate your patience and support.